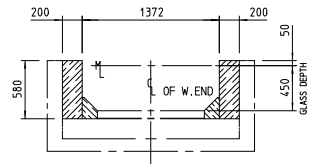


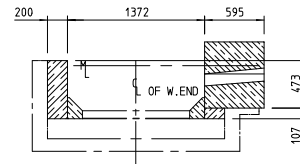
NOTE:-

1. ASSEMBLY DIMENSIONS SHOWN ARE FINAL COLD DIMENSIONS.
2. WALL BLOCKS TO BE DRESSED ON TOP AND BOTTOM FACES AND ON ALL JOINT FACES.
ALL OTHER BLOCKS TO BE GROUND WHERE MARKED THUS G (SEE DETAILS).
3. ALL BLOCKS TO BE MARKED ON ONE MAJOR FACE TOWARDS INSIDE OF WORKING END AND ALSO ON THREE MINOR FACES.
4. ALL BLOCKS TO BE ASSEMBLED AS SHOWN FOR INSPECTION AND NUMBERED IN SEQUENCE AS SHOWN.
5. SEE SHEETS 2, 3 & 4 FOR BLOCK DETAILS.

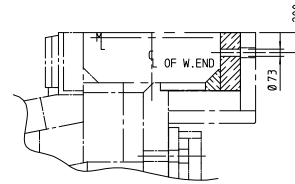
KEY:- WB = WALL BLOCK
ENT = CHANNEL ENTRY BLOCK



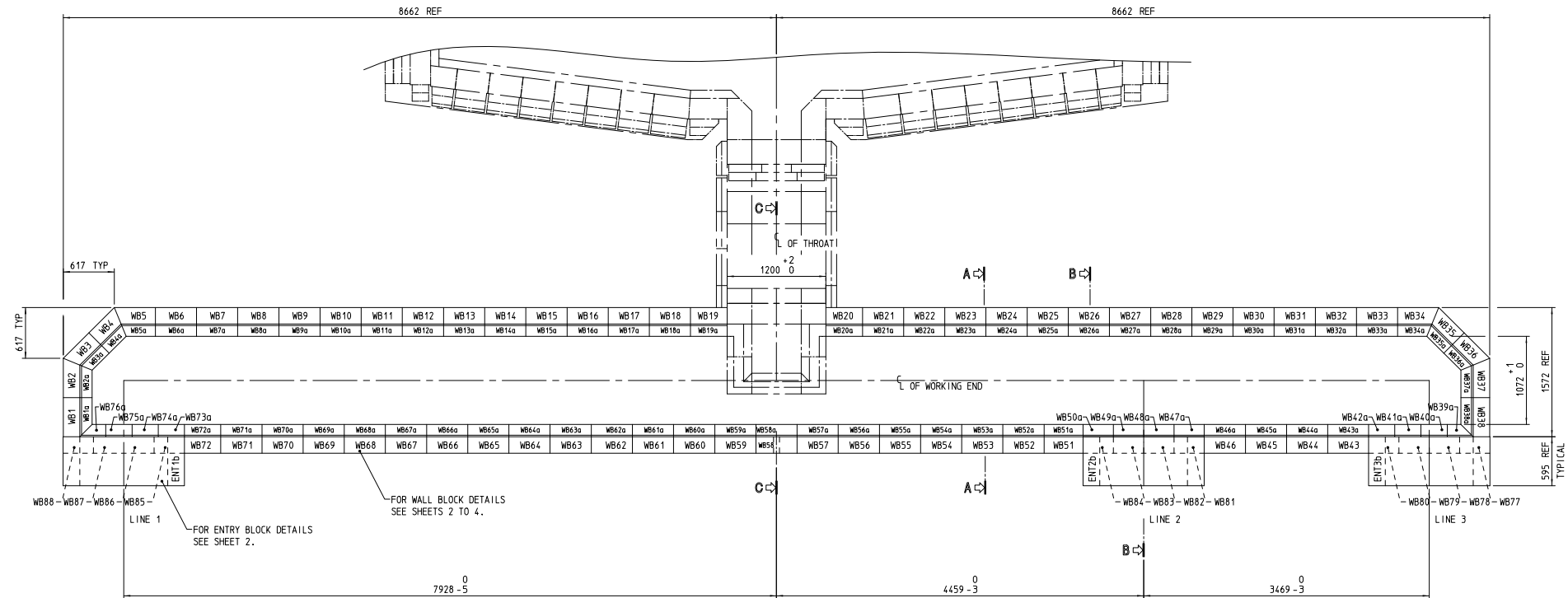
SECTION A-A



SECTION B-B



SECTION C-C



DIMENSIONS SHOWN ARE COLD DIMENSIONS

MATERIAL:- FUSION CAST AZS (33%ZrO2)

REFRACTORY TOLERANCES
 ± 2mm UP TO 350mm
 ± 3mm UP TO 1000mm
 ± 4mm UP TO 1500mm
 ± 5mm UP TO 2000mm
 APPLIES TO ALL DIMENSIONS INCLUDING HOLES
 AND HOLE CENTRES UNLESS OTHERWISE STATED.
 ALL DIMENSIONS IN MILLIMETRES UNLESS OTHERWISE STATED.

NO REPRODUCTION OR PUBLICATION OF THIS DRAWING
 MAY BE MADE AND NO ARTICLE MAY BE MANUFACTURED
 OR ASSEMBLED IN ACCORDANCE WITH THIS DRAWING
 WITHOUT PRIOR WRITTEN CONSENT. THIS PROHIBITION
 IS A TERM OF ANY CONTRACT RELATING TO THIS
 DRAWING.



Fives Stein Ltd
 4A CHURCHWARD,
 SOUTHMEAD PARK, DIDCOT,
 OXON, OX11 7PB UK
 TEL.01235 811111 FAX.01235 817676
 email fivesstein-bhm@fivesgroup.com

CUSTOMER EKRA
 FIRST ANGLE PROJECTION
 SCALE DRAWN AT 1:20 PRINT N.T.S.

TITLE:
 WORKING END WALL BLOCK
 ASSEMBLY

ISSUE: . . .
 DATE 29/11/07 DRG. No.
 DRAWN MKV DO 454-411-10003
 SHT 1 OF 4